



Celebrating 35 years of
transforming lives



Annual Report 2022

Our Vision

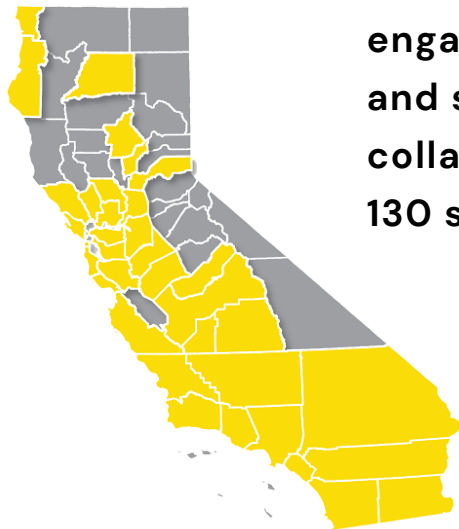
We are dedicated to achieving economic and social equality for all through education.

Our Mission

To provide families with the knowledge and skills to partner with schools and communities to ensure their children achieve their full potential.

There are seven offices across the state, in Northern, Central, and Southern California. Located in: Bay Area, Modesto, Fresno, Bakersfield, Los Angeles, Inland Empire, and San Diego.

We develop families' capacity to engage in their children's education and strengthen parent-teacher-school collaboration in partnership with over 130 school districts.



From Our CEO



CEO Gloria Corral and Co-Founder Dr. Alberto Ochoa

For 35 years, our social justice and educational equity work with families and communities has changed the educational trajectory of children by empowering families to engage and support their children's learning. This impact is the legacy of our founders and remains constant in the work we do today.

As we continue to listen and respond to the issues families and education partners face, we innovate, create, and reimagine how to strengthen the critical partnership between families, educators, and the communities in which they live. The strategic plan we launched this year is the roadmap for our growth. It establishes our priorities and our path to deepen our impact across California and the nation. The five strategic priorities below reflect a comprehensive framework that strengthens our team and the work with families, educators, and communities.

1. Program Impact and Outcomes
2. Advocacy and Influence
3. Staff and Board Effectiveness
4. Financial Stability and Sustainability
5. Operations and Technology

There are new and exciting opportunities ahead which will enrich our history and build bridges to a brighter future for children, their families, and the communities we serve.

In Partnership,

Gloria Corral



Our Story



In the summer of 1987, Reverend Vahac Mardirosian and Dr. Alberto Ochoa, a professor at San Diego State University, teamed up with district superintendent Tom Payzant to discuss the challenges and struggles parents were facing at Sherman Elementary School in the San Diego Unified School District.

What started as a two-hour dialogue with a dozen parents evolved into eight weekly sessions that identified key issues for families. This led to the development of the Parent Institute for Quality Education.

As we celebrate our 35th anniversary, we want to honor the trajectory of Dr. Ochoa and Dr. Kenji Ima, a founding board member.

Dr. Ochoa was relentless in advocating for students in low-income communities and from diverse backgrounds. He knew they had the same capacity and the same rights to high quality education as any other child, and that given the tools their parents would understand and engage with the school system, changing the course of their students' lives.

Dr. Ima committed his time and talent to the organization for over 20 years. His background in academia and his experience advocating for the rights of marginalized youth was an important contribution to our mission.

Dr. Ochoa's and Dr. Ima's work will continue to spread as PIQE grows. Their example had a lasting impact on all of us. Their legacy will live on in the thousands of families who they have impacted through their leadership, commitment and vision.





A Milestone



We celebrated **35 years** of empowering families, serving communities and building partnerships. We provide evidence-based programs to more than 20,000 families and nearly 400 schools annually. We work with English Learners, immigrants, refugees, and low-income families and communities.



750K

Families served



2.2M

Students impacted

PROGRAMS

- ✓ K-12 Family Engagement
- ✓ Family Leadership
- ✓ Educator Workshops
- ✓ Early Childhood Development
- ✓ Digital Literacy, Inclusion and Adoption
- ✓ Bridge to College
- ✓ Family Literacy (P-3)
- ✓ Social-Emotional Learning
- ✓ Civic Engagement
- ✓ STEM Programs for Families
- ✓ Culturally Responsive Engagement for Educators

Ripple Effect

MULTIGENERATIONAL IMPACT



A graduate of Cal State University Northridge, Yanet López, is a first-generation college student. The efforts of her parents, who had to leave Mexico in search of a better future, are not taken lightly and now Kevin, her son, has the responsibility to carry on.

“The goal is for there to be progress from one generation to another,” said Yanet.

“Our dream was for our children to attend university,” said Juan López, who along with his wife, Lorena Cardenas, is a PIQE graduate.

“ I FEEL WONDERFUL BECAUSE I UNDERSTAND ALL THAT HAS BEEN ACHIEVED, AND IT WAS DUE IN GREAT PART TO US COMING TO THIS COUNTRY AND TO THE WORKSHOPS WE TOOK AT PIQE.” - JUAN LÓPEZ

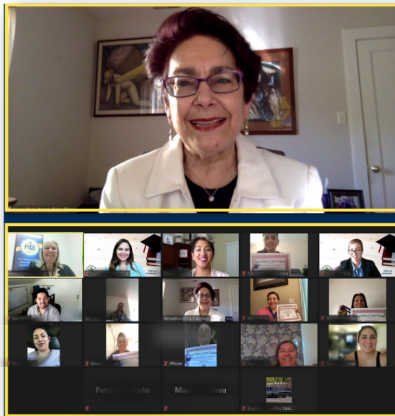
“The workshops helped us a lot. We learned how to behave in a school setting and were able to practice with other parents,” said Mrs. López.

Now, Yanet has bigger goals for Kevin. “It is no longer just about graduating from college, we’ve walked that stretch, we now want to consider what are the professions that will be needed in the future,” she said. “Our conversations are deeper now.” She also wants her son to seize opportunities that she did not have, such as traveling abroad and playing a sport at his university.



Lifting Their Voices

We launched our strategic plan, which includes our advocacy and influence strategy. By listening to families and developing partnerships, we collaborate to positively impact communities.



Senator Anna Caballero congratulated the graduates of the Civic Engagement program.

We developed the policy framework, expanded our national partnerships, and increased our representation on committees, commissions, and coalitions to advance our mission.

We successfully lifted the voices of families in California to highlight key issues like expansion of financial aid for students, providing learning recovery and social-emotional support in the classroom, and increasing broadband access.

We continue to partner with coalitions in Fresno, Los Angeles, and San Diego to strengthen Digital Equity.

Survey Results

In collaboration with Attendance Works and Families in Schools we conducted a community needs assessment to identify the needs and concerns of families across California as they return to school and work after the COVID-19 pandemic. For many of these students staying at home meant missing out on vital learning time and growth opportunities. These students need more support than ever before.

49%

of families did not own their own technology.

23%

of families did not have access to email.

49%

of families were either moderately or extremely concerned about their student's academic learning.

Building Partnerships

Strategic Initiatives and Priorities

- ✓ Expand family involvement in educational and community settings.
- ✓ Empower families to engage in the education system.
- ✓ Strengthen advocacy and influence by creating more access points for families to engage in meaningful and participatory decision-making.



Dr. Michele Cowell-Copher
Fresno Superintendent of Schools

Leading the Way

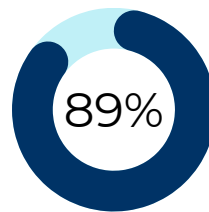
In the summer we partnered with Californians Together, The Education Trust-West and other organizations to support English Learners through the Central Valley Multilingual Consortium. In the listening sessions we learned about the needs of this community. We look forward to deepening our collaborative work.



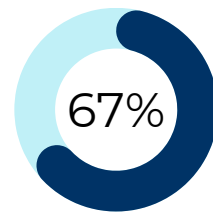
The data below reflects the importance of our work in the Central Valley.



6 out of the 8 Central Valley counties are among the 25 counties with the largest number of immigrant students.



89% of Central Valley English Learners are socioeconomically disadvantaged.



67% of students in the Central Valley are Hispanic.

Pivoting and Adapting

During the COVID-19 pandemic, we had to pivot and adapt to meet the needs of families and the communities we serve, resulting in the launch of our online Family Engagement programs. We reshaped our curriculum to deliver it virtually and included direct support for digital literacy. This made it possible for many families to navigate the online world for themselves and their children.



8,537 families

completed the Family Engagement program in a virtual or hybrid modality.

“The Social-Emotional Learning (SEL) program has helped me realize that my children's mental health is also important for them to be successful in life because it affects the decisions that they make for their future.”
- Alrenita Anderson, PIQE graduate

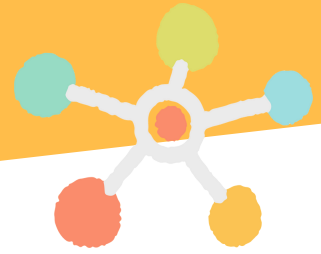


1,609 families

completed our Social-Emotional Learning program.

As children returned to in-person instruction, their social-emotional needs have continued to impact their learning. We listened to the struggles that families and educators were facing and highlighted the Social-Emotional Learning component in our Family Engagement curriculum to discuss the importance of Social-Emotional Learning not only in school but at home and for the students' well-being.

STEM Success



The three-year partnership with California State University San Marcos was created to provide STEM knowledge to families of first-generation Latino university students. The goal is to support and encourage their student to graduate with a science degree and pursue a STEM career. According to the Bureau of Labor Statistics, STEM occupations are projected to grow by ten percent in the next ten years. These workshops are a pathway for families and their students to learn about the jobs of tomorrow.

Before STEM program



of families reported that they understood the importance of focusing on STEM for their student.

After STEM program



of families reported that they understood the importance of focusing on STEM for their student.

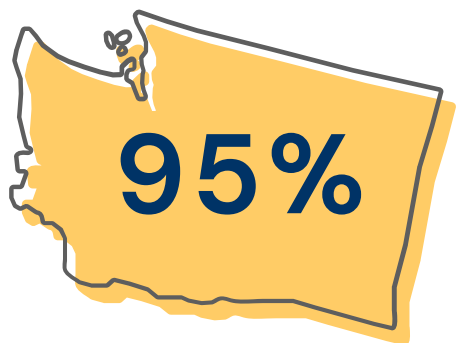
99%
of students whose parents completed the program expressed their desire to continue with their STEM college education.



“ I feel lucky to have had the opportunity to receive all this information in Spanish. Many times we cannot help our children as we would like because we do not understand English very well. I am very grateful to the University and to the PIQE Program. ”

National Partnerships

In partnership with the National Association for Bilingual Education (NABE) we began an 8-week "**Para Todos**" program at Everett Public Schools in Washington. The goal of the program is to improve language and literacy for English Learner families by introducing staff and families to our best practice models of family engagement. This upcoming year, this partnership will expand to five state partners.



of families who participated in the "Para Todos" program graduated.

"Partnering with PIQE has been a wonderful way to intentionally engage Spanish speaking families within our school. They appreciated the support and connection that this effort has provided and look forward to future engagement opportunities."

- Blythe Young
Principal at Emerson Elementary

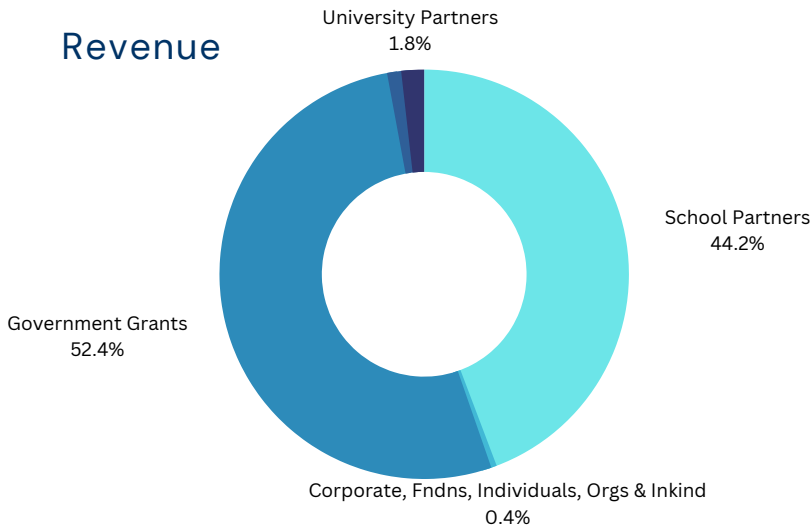
We also partnered with the Charles A. Dana Center at The University of Texas at Austin to support the **Launch Years Initiative**. This effort supports 20 states with improvements to their math pathways and alignment from kindergarten to higher education. We provide technical support and promote family engagement as part of the decision-making process.

\$7.2 MILLION RAISED

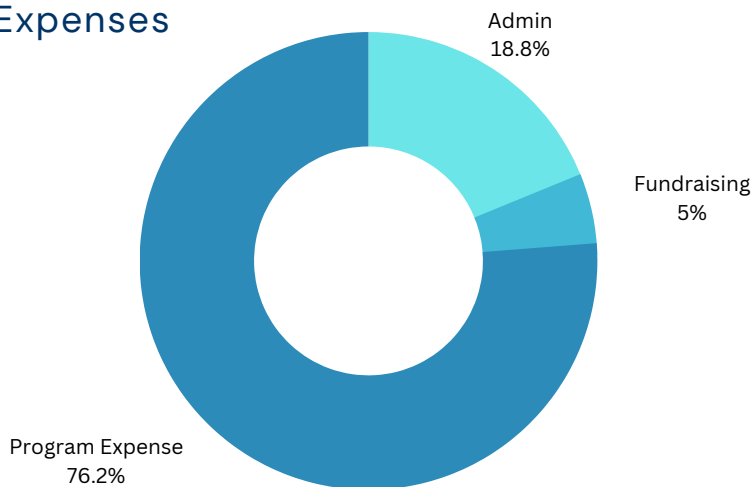
76%

of revenue spent on family
programs

Revenue



Expenses



Investment and Trust

"The California State University is thrilled to celebrate not only the 35th anniversary of PIQE, but also our more than 15 years of partnership empowering parents with the tools, knowledge and confidence they need to support their children in their pursuit of a college degree and a bright future. There is no doubt that our ongoing collaboration has impacted countless families, elevated communities and brought our great state closer to its full potential."



DR. JOLENE KOESTER
INTERIM CHANCELLOR,
CALIFORNIA STATE UNIVERSITY

We are thankful!

It is because of you that we impact the lives of thousands of families every day. Together we will continue empowering families to be part of their children's educational journey.

CORPORATIONS AND FOUNDATIONS

Bill and Melinda Gates
California Community Foundation
California Public Utilities Commission
Central Valley Community Foundation
Comcast
Edison
Fordham Foundation
Fresno Building Healthy Communities
Girard Foundation
Golden 1 Credit Union
Heising Simons Foundation
Kupanda
Los Angeles County Office of Education
Marin Community Foundation
McClatchy Foundation
Association for Bilingual Education Para Todos
- U.S. Department of Education
San Diego Foundation
Dr. Seuss
San Diego State NPD Grant
Sobrato Family Foundation
The California Endowment
The Ralph M. Parsons Foundation
T-Mobile
United Parent Leaders Action Network
University of California, San Diego
University of Texas Austin Dana Center
Weingart Foundation
William and Flora Hewlett Foundation
Wonderful Foundation GEAR UP National
Nicholas B. Ottaway Foundation
Cox Foundation

GOVERNMENT

County of Los Angeles
County of San Diego
County of Fresno

UNIVERSITY PARTNERS

CSU-Dominguez Hills
CSU-Fresno
CSU-Long Beach
CSU-Sacramento
CSU-San Marcos
San Diego State University
University Enterprise Corporation
(UEC) at CSUSB
University of California at Los Angeles
University of California at San Diego

SCHOOL PARTNERS

Adam Elementary School
Ahwahnee Middle School
Albert F. Biella Elementary
Alfred B. Nobel Charter Middle School
Alvin Elementary
Amc Ytec, Lf Smith & Southwest
Andrew Hill High School
Animo Pat Brown
Arlington High School
Arlington Regional Learning Center
Arrellanes Junior High School
Art Freiler School K-8
Bakersfield High School
Banning High School
Bartlett Middle School
Bayside Elementary
Bell Middle School
Belleview Elementary
Bellflower High School
Ben Lomond Elementary School
Benjamin Franklin Elementary School
Betty Gibbel Regional Learning Center
Berkeley USD Middle School
Berkeley USD Elementary School
Berkely Unified School District
Bernice Ayer Middle School
Bohannon High School
Boulder Ridge Elementary School
Bridges Academy Middle School
Brown Elementary School
Browning Road Steam Academy
Bud Carson Middle School
Buhach Colony High School

California City Middle School	Grover Beach Elementary School
Calistoga Joint Unified School District	Carl Hankey K-8 Academy
Campo-Clover Flat Elementary School	Harden Middle School
Campus Park Elementary School	Harmony Magnet Academy
Canyon & Creekside Middle School	Harvest Valley Elementary School
Capistrano Valley High School	Hawthorne Middle School
Carrillo Ranch Elementary School	Hawthorne School District
Caruthers USD Elementary School	Healdsburg Elementary School
Caruthers USD High School	Healdsburg Junior High School
Cedar Lane Elementary School	Helen Lehman Elementary School
Ceiba College Preparatory Academy	Hemet High School
Centennial High School	Hidden Hills Elementary School
Central Middle School	Highland Elementary School
Central Unified School District	Highland High School
Central High School	Highlands High – Rio Linda High School
Chemawa Middle School	Hoover High School
Chula Vista High School	Horizon Elementary School
Claremont High School	Howard Pence Elementary School
Cohasset Street Elementary School	Indio High School
Colony High School	Jack G. Desmond Middle School
Colton Middle School	Jackson Elementary School
Columbus Elementary School	James Lick High School
Commonwealth Elementary School	Jefferson High School
Corvallis Middle School STEAM	William G. Jehue Middle School
Crawford High School	John Doyle Elementary School
Creekside Junior High School	John Gutierrez Middle School
Creekside Middle School	John Marshall Elementary School
Crystal Middle School	Joli Ann Leichtag Elementary School
Cypress Elementary School	Julian Nava Middle School
Dana Hills High School	Julien Elementary School
Denair Elementary	Kammann Elementary School
Davidson Middle School	Katherine Johnson Middle School
David Long Regional Learning Center	Keiller Leadership Academy
Desert Ridge Academy School	Kenilworth Junior High School
Don Antonio Lugo High School	Kern Avenue Elementary School
Don E. Kennedy Regional Learning Center	Keyes Elementary School
Dos Caminos Dual Immersion School	Kucera Middle School
Dos Palos High School	La Habra High School
Dr. J. Michael McGrath Elementary School	La Mirada/Smythe Elementary School
Dr. Julian Nava Learning Academy	Lafayette Primary Center
Dr. Martin Luther King Jr. Elementary School of Arts	Lakewood High School
Dr. Quincy Jones Elementary School	Lange Elementary School
Dr. Theodore T. Alexander Jr. Science Center	Las Palmas Elementary School
Dutcher Middle School	Lilian Larsen Elementary School
Earle Williams Middle School	Lincoln Elementary School
East Bakersfield High School	Lincoln High School
Educational Partnership High School	Loma Vista Elementary School
Eisenhower High School	Lorena Falasco Elementary School
El Camino Junior High School	Los Altos High School
El Camino/Oceanside High School	Los Banos Elementary School
El Roble Intermediate	Los Alisos Middle School
Ethan A. Chase Middle School	Los Banos Jr. High School
Eureka City Schools – Elementary School	Los Alisos Middle School
Eureka City Schools – High School	Los Banos Jr. High School
Eureka City Schools – Middle School	Los Padres Elementary School
Fallbrook Union School District	Luther Burbank High School
Family Resource Center	Lyndon B. Johnson Elementary School
Family Resource Center-RUSD	Madera High School
Farmdale Elementary School	Madera South High School
Farmersville Unified School District	Madison High School
Fay Elementary School	Manzanita Elementary School
Fesler Junior High School	Mar Vista High School
Fipps Primary School	Marco Forster Middle School
Florin High School	Marina Vista Elementary Arts Academy
Foothill High School	Martin Luther King Jr. Middle School
Franklin Elementary School	Marysville Joint Unified School District
Fremont Unified School District	Marysville High School
George Kelly School K-8	Matilda Torres High School
Grand Terrace High School	Matthew Gage Middle School
Granger Junior Middle School	Maywood Academy High School
Great Valley Elementary School	McCabe Elementary School
Greenleaf Elementary School	McDowell Elementary School
Griffith Middle School	McFarland Middle School
Griffith Steam Magnet Middle School	McKinley Elementary School

Mendota Elementary School
Mendota High School
Mendota Junior High School
Mercy Springs Elementary School
Mesa View Elementary School
R.M. Miano Elementary School
Miguel Contreras Learning Complex
Mira Mesa High School
Mira Monte High School
Mission Oak High School
Modesto High School
Modesto Middle School STEM
Modesto City Schools
Modesto Middle School
Mojave Elementary School District
Mojave High School
Monlux Elementary School
Montara Elementary School
Monte Vista Elementary School
Monte Vista High School
Monte Vista Middle School
Montgomery Middle School
Morse High School
Mount Miguel High School
Mountain View High School
Mt. Pleasant High School
Natividad Elementary School
Nesbit Middle School
Nettie L. Waite Middle School
Newark Elementary School
Newark Middle School
Newhall Elementary School
Newport Harbor High School
Nicoloff Elementary School
Nipomo Elementary School
Nogales High School
North Mountain Middle School
North Elementary School
Norwood Jr High /Rio Tierra Jr. High School
Oakgrove High School
Oceano Elementary School
Old Orchard Elementary School
Olympic Primary Center
Orosi High School
Orthopedic Medical Magnet High School
Overfelt High School
P.A. Walsh Elementary School
Pacific Drive Elementary School
Palm Springs Regional Learning Center
Pasadena High School
Paso Robles High School
Paso Robles Middle School
Patriot High School
Patterson High School
Peachland Avenue Elementary School
Petaluma High School
Pioneer Elementary School
Pond Elementary School
Port of Los Angeles High School
Potrero Elementary School
Prairie Vista Middle School
Price Scholars/Wilson Middle School
Prospect High School
Quincy Jones Elementary School
Raisin City Elementary School
Ramona High School
Rancho Milpitas Middle School
Rancho San Juan High School
Rancho Viejo Middle School
Rialto High School
Rialto Middle School
Rice Elementary School
Riverdale Elementary School
Riverdale High School

Romoland Elementary School
Sacred Heart Catholic School
Saint Michael's Catholic School
Salida Elementary School
Salida Middle School
San Antonio High School
San Clemente High School
San Diego High School
San Jacinto High School
San Juan Capistrano Elementary School
San Juan Hills High School
San Leandro High School
San Marcos Middle School
San Martin / Gwinn Middle School
San Rafael High School
San Ysidro High School
San Ysidro Middle School
Santa Clara High School
Santa Maria High School
Santa Maria Joint Union High School District
Santa Teresita Catholic School
Shadow Hills High School
Shafter High School
Shorecliffs Middle School
Silver Creek High School
Silverado High School
Solana Beach School District
South Lake Tahoe Middle School
Southwest High School
St. Frances Catholic School
St. Ignatius Catholic School
St. Michael Catholic School
St. Helena Elementary School
Steele Lane Elementary School
Sumner Danbury Elementary School
Sunset Elementary School
Sweetwater High School
Tahquitz High School
Tehipite Middle School
Tenaya Middle School
Terra Linda High School
The Accelerated School
Theodore Alexander Science Center
Theodore Alexander Science Elementary School
Thomas Jefferson Middle School
Thomas Law Reed Elementary
Thomas Russell Middle School
Tioga Middle School
Tommie Kunst Middle School
Tulare Joint Union High School
Tulare Union High School
Tulare Western High School
Tumbleweed Elementary School
Turlock High School
Turlock Junior High School
Twin Rivers Elementary School
Twin Rivers Unified School District
University Heights Middle School
Upland Junior High School
Valley High School
Venetia Valley K-8 School
Victor Valley High School
Viejo Elementary School
Vista Del Mar Middle School
Wakefield Elementary School
Walters Junior High School
Walters Middle School
Washington Academic Middle School
Washington Colony Elementary School
Washington Elementary School
Weaver Middle School
West Adams High School
Westmont High School
Wilcox High School

Wiley Canyon Elementary School
Williams High School
Willow Elementary School
Willows High School
Winters High School
Woodlake Unified School District
Woodland Park Middle School
Woodville Elementary School
Workman Elementary School
Workman High School
Yerba Buena High School
Young Empowered Scholars Academy
Elementary School
Yucca Elementary School

BEST PRACTICES

Winthrop University
Charleston County Public Schools
Rock Hill Public Schools District
Greenville County Schools
Fort Mills Public School District
Milwaukee Public Schools
National Association for Bilingual
Education (NABE)

NATIONAL PARTNERSHIPS

Arizona
Colorado
Idaho
Maryland
Massachusetts
Minnesota
New Mexico
New York
Montana
Ohio
South Carolina
Texas
Washington
Wisconsin
Mexico City (Mexico)

LEADERSHIP

Senior Leadership

Gloria Corral
President and CEO

Stephen Ajani
V.P. External Relations

Sheri Blades
V.P. Program and Impact

Derek Parker
V.P. Finance and Administration

Regional Executive Directors

Sonia De Leon
Bakersfield

Christan Maxwell
Bay Area

Gabriela Rios
Central Valley

Emma Cabrera
Los Angeles

Lilian Hernandez
Inland Empire

Sergio Rosas
San Diego

Chair

Karen Y. Zamarripa
President/CEO
Karen Zamarripa Consulting

Vice Chair

Susana I. Santana
Vice President, Legislative
Strategy AT&T California

Treasurer

Dr. Jamillah Moore
V.P. Student Affairs and
Enrollment Management
San Francisco State
University

Board of Directors

Dr. Ryan E. Alcantara
V.P. of Student Affairs
Marymount California University

Elizabeth Sanchez-Monville
Vice Chair
Riverside Public Utilities

Jose Padilla
Executive Director
California Rural Legal
Assistance

Guillermo Mayer
President/CEO
Public Advocates

Dr. Sera Hernandez
Department of Dual Language
and English Learner
Education/College of Education
San Diego State University

Leonor Velazquez Davila
Associate Director
Antitrust Compliance and
Americas Legal Compliance
Intel Corporation

Fidel Ramirez
Chief Executive Officer
Vaughn Central



Home Office

22 West 35th Street Suite 202
National City, CA 91950

T: 619.420.4499

www.PIQE.org | info@piqe.org

