



2023 Impact Report

Parent Institute for Quality Education (PIQE) engages, empowers and transforms families, ensuring their children reach their full potential.

ENGAGE

EMPOWER

TRANSFORM





Table of Contents

A Year of Impact and Empowerment	1
Organization Overview	2
Developing Family Leaders	6
Parent Testimony	7
Testimonials	8
Statewide Family Engagement Center	9
Digital Literacy	10
Funder Spotlight	11
Partnerships	12
Staff Testimony	13
Financial Highlights	15
Acknowledgments	16

A YEAR OF IMPACT AND EMPOWERMENT

GLORIA CORRAL

President and CEO

As we look back on the transformative journey of 2023, the unwavering partnership of our parents is paramount. Their inspiring dedication and collaboration have been more than just the foundation of our achievements; they have been the very heartbeat of educational empowerment.

Our focus on educational equity and social justice reflects our dedication to creating opportunities for families to effectively engage in their children's education and partner with educators to strengthen the well-being and educational outcomes. Through the implementation of our policy framework, we have amplified our impact by bringing family voice and perspective to policy discussions. We have also supported families to share their stories and raise their voice to inform what happens in their school and community.

Closing the digital divide continues to be crucial. We understand that access to technology is not just a luxury, but a necessity for educational success. Our partnerships have been key in providing families with connectivity and digital literacy tools essential for their children's learning so that families can actively engage in the digital era.

The Statewide Family Engagement Center grant has been a milestone achievement for us, enabling us to expand our reach and deepen our impact. Through this work, we will foster stronger connections between families, schools, and communities, creating a supportive ecosystem that strengthens families' engagement across the state.

Our involvement in the Universal Pre-Kindergarten (UPK) Advisory Committee was crucial, as we conducted research and played a key role in shaping policies. Similarly, as a member of the Dual Language Learning Policy Advocacy Partnership, we continue to inform the policy discussions impacting the educational needs of Dual Language Learners. Our involvement underlines our commitment to informing inclusive and effective early learning system for all children in our state.

Looking forward, we are filled with hope and excitement as we empower families to have a voice and engage in their children's education because we are not just envisioning a brighter future; we are actively building it with families, educators and communities.

Together, we are making a difference and we will continue to pave the way for a more equitable and just educational landscape.



Mission

To provide families with the knowledge and skills to partner with schools and communities to ensure their children achieve their full potential.

Purpose

Empowering Families, Enriching Communities. We focus on enabling low-income and immigrant families to actively participate in and positively impact their children's education.

Vision

A world where education is the key to achieving social and economic equality for all families, irrespective of their background.





Bay Area



Modesto



Fresno



Bakersfield



Los Angeles



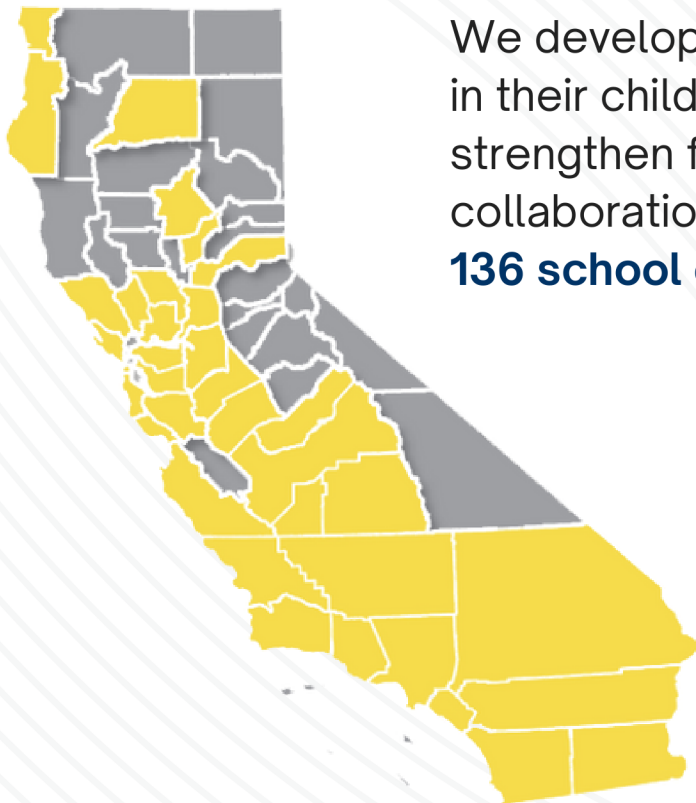
Inland Empire



San Diego

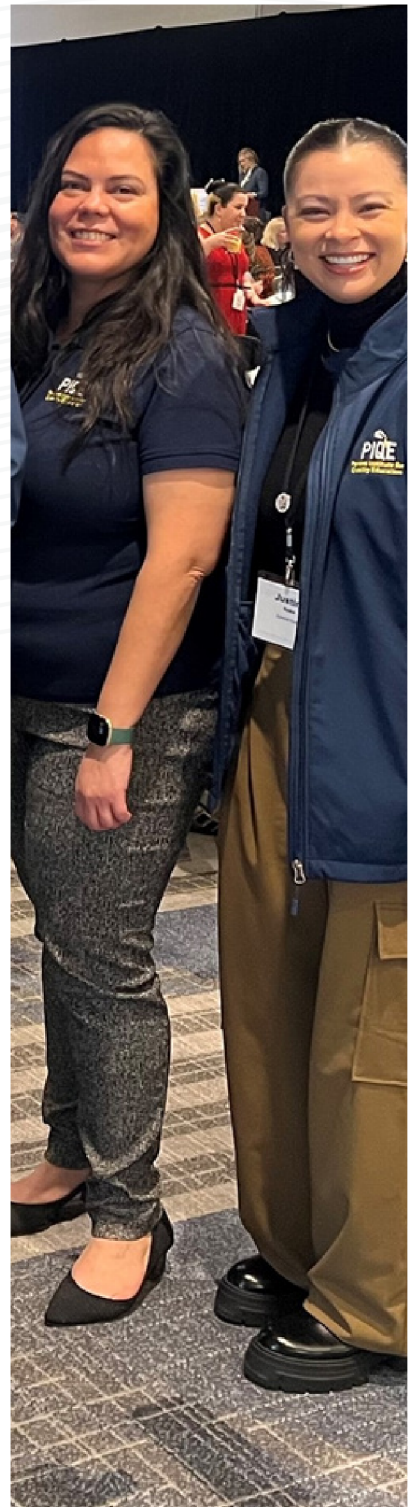
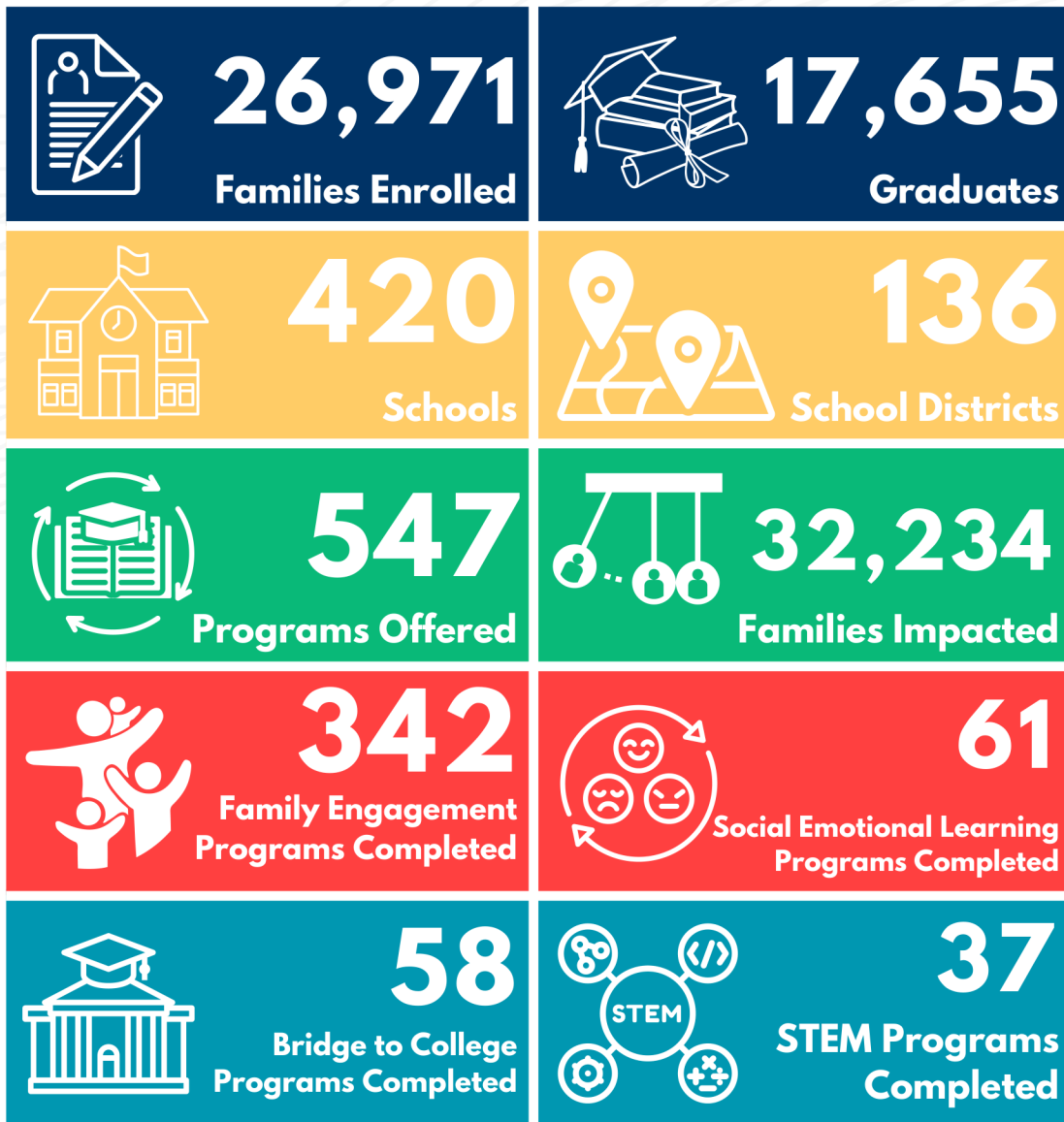
Our Network

There are seven offices across the state, in Northern, Central, and Southern California. Located in: **Bay Area, Modesto, Fresno, Bakersfield, Los Angeles, Inland Empire, and San Diego.**

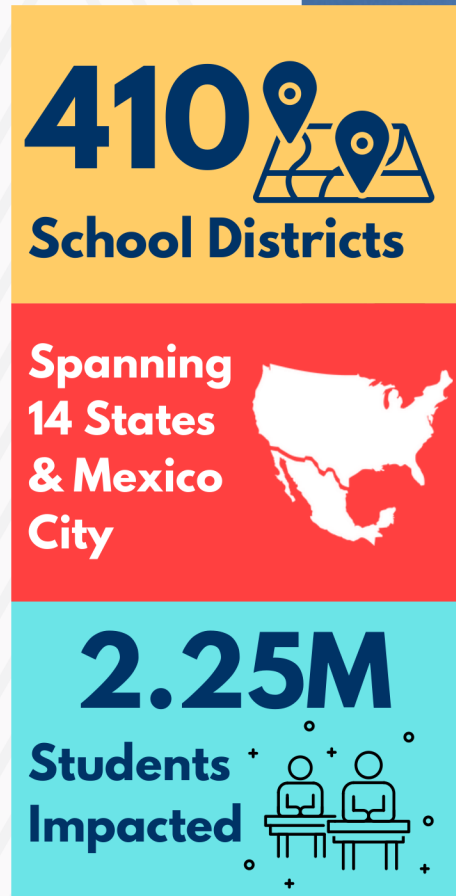


We develop families' capacity to engage in their children's education and strengthen family-educator-school collaboration in partnership with **136 school districts.**

Impact at a Glance in 2023



SINCE 1987



OUR PROGRAMS

- Signature Family Engagement Program (K-12)
- Early Childhood Development
- Family Literacy Program (P-3)
- Social-Emotional Learning
- STEM Program for Families
- Bridge to College Program
- Civic Engagement Workshops
- Educator Workshops
- Family Leadership Program



Developing Family Leaders

Through our Family Leadership Program we are committed to developing parent leaders and inspiring positive changes for educational opportunities for their children. Our latest workshop is designed to empower families with the confidence and skills essential for becoming advocates for their children's education.

The purpose of this program is to assist families in cultivating their leadership skills, fostering positive actions within their households, and contributing to positive changes within the school and community at large.

Through this process, families view themselves as leaders with the capacity to positively influence their environment. The program encourages the promotion of strong relationships among group members and emphasizes recognizing each individual's unique talents, thereby facilitating the harnessing of the group's collective potential to achieve set goals.



MEET JULIA SOSA

In 2009, Julia encountered an ordeal with her daughter's teacher that would radically alter the trajectory of her life. This wasn't just a bump in the road of parenthood; it was the spark that ignited a fierce and unyielding fire within her—a fire that has since blazed a trail in the field of educational advocacy.

“The pain and helplessness of not getting the help I needed, and the feeling that they were taking it lightly is what made me say ‘I need to know more’,” she said.

Sosa's journey led her to us, where she embarked on a transformative journey. What began as a quest for personal understanding soon morphed into a passionate crusade for systemic change.

In 2014, her efforts led her to be chosen as a key representative for the United Parent Leaders Action Network (UPLAN), further amplifying her impact in the field of educational advocacy.

She is also a member of the Parent Leaders Advocates for the National Association for Family, School and Community Engagement (NAFSCE). Her advocacy efforts cover crucial issues ranging from immigration to education, and she has tirelessly championed the cause of free child care in Washington, D.C.



“As a parent leader, my role is to advocate for those who may not have the opportunity or knowledge, striving to make systematic changes,” Sosa declares.

“What keeps me going is my family. My children are adults now, but I have grandchildren and I am very involved in their education. Initially, it was for my children,” she says, “but now I do it for my friends, neighbors, and the broader community.”



Testimonials

“When we first came to this country, I thought that my children would not be able to attend a university because of the language barrier, but at PIQE I learned about the English Language Proficiency Assessments for California Program and other programs that the school provides. Recently, my eldest son started his college application process, he wants to be an optometrist, and I feel a sense of calm knowing that I can help him in this process.”



Isabel Hernández
Parent Graduate



Yesenia Leon
Vice Principal
Williams High School

“I have seen the impact PIQE has had on our parents. They are talking about going to college, about the requirements, the standards, and how to make an appointment with the school counselor; things we did not see at the beginning of the program. I feel empowered because I know we have formed a community of parents that will advocate for their children so that they can pursue a career beyond high school.”



Statewide Family Engagement Center

With a \$5 million grant over 5 years from the U.S. Department of Education, we are collaborating with the California Department of Education (CDE), CDE Foundation, National Association for Family, School, and Community Engagement (NAFSCE), and the University of California Irvine.

What This Means:

- For Educators: Enhancing capabilities through professional development.
- For Families: Empowering involvement, with a focus on English Learners and migrant communities.
- For the Community: Building a foundation and establishing evidence-based practices in family engagement.



The SFEC will play an essential role in uplifting families and building the capacity of educators to connect with families in support of their student's education.

Gloria Corral
President and CEO

Strategies:

- Form statewide advisory committee.
- Collaborate with Local Education Agencies (LEAs).
- Professional development opportunities for educators.
- Create a family engagement framework.

Digital Literacy

In today's fast-moving educational world, digital access is critical for all families to effectively engage. Without consistent and reliable access to digital tools and the internet, students from less wealthy backgrounds are at a disadvantage, struggling to keep up academically.

To combat this issue, we collaborated with key organizations including the California Community Foundation, California Public Utilities Commission, Comcast, and AT&T. Our collective aim was to narrow the

digital divide that disproportionately affects students from varying economic backgrounds. Our efforts were centered on equipping needy families with the necessary technology and internet access to participate fully in their educational endeavors.



Created 890 applications, with 696 households approved.

In 2023, our work with the Affordable Connectivity Program (ACP) marked a notable milestone. Through this partnership, we reached out to families with 8,417 calls to help them gain access to discounted or free internet services. This effort led to the creation of 890 applications, out of which 696 households received approval. In addition, we launched digital literacy training programs. These efforts to enhance the understanding and use of digital tools, cover the basics from setting up an email account to identifying essential student apps, and provided guidance on online safety.

Our plans for the future include expanding our digital literacy training, organizing technology information nights for families, extending our support beyond the ACP, and a dependable news source and partner for families navigating the digital landscape.

Funder Spotlight

We are proud to report another year of strong support from our amazing partners and funders.

Southern California Edison

Southern California Edison is a dedicated and longstanding partner. Their steadfast belief in the transformative power of education motivates their commitment to our mission, recognizing its potential to catalyze positive change in the lives of individuals, communities, and the world at large.

While their support spans various facets of our organization, Edison places a particular emphasis on advancing STEM (science, technology, engineering, and math) education at the middle school, high school, and college levels. This commitment extends to our specialized college-access program, Bridge to College.









The James B. McClatchy Foundation

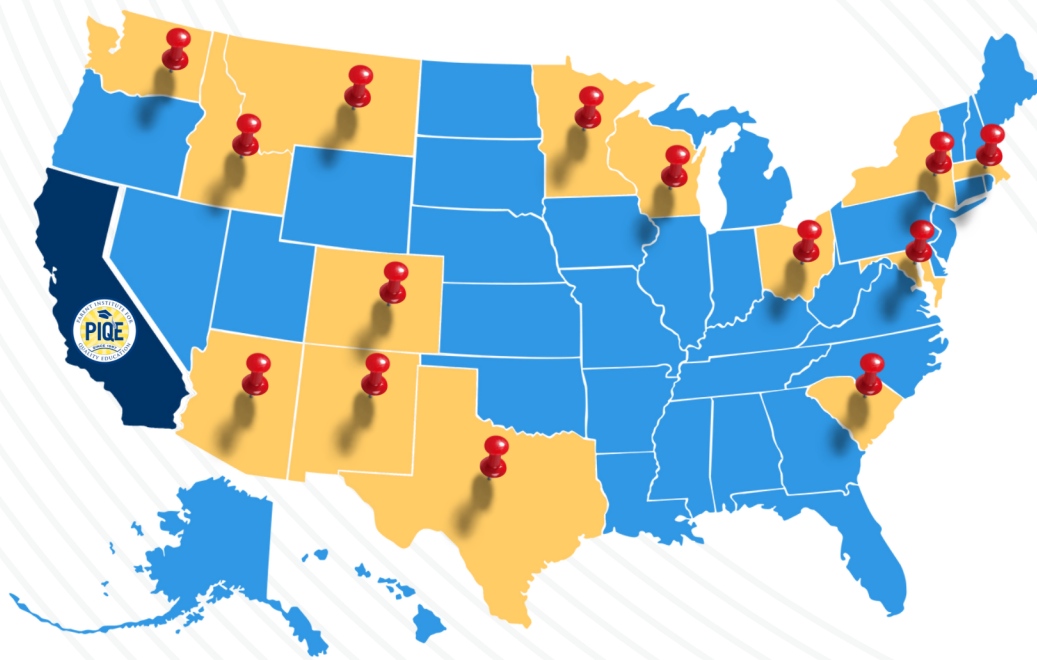
The James B. McClatchy Foundation takes great pride in its ongoing commitment to investing in the people and infrastructure of the Central Valley.

The pivotal three-year grant provided was strategically designed to elevate the number of community (parent) leaders in the Central Valley, recognizing their vital role in shaping the region's trajectory; fortify family engagement within schools; and drive informed policy and advocacy efforts by conducting a thorough community needs assessment.



NATIONAL PARTNERSHIPS IN 2023

Charleston County Public Schools		South Carolina
Rock Hills Public Schools District		South Carolina
Greenville County Schools		South Carolina
Fort Mills Public School District		South Carolina
Milwaukee Public Schools		Wisconsin
Rochester Public Schools		Minnesota
Elev8 for Baltimore Public Schools		Maryland
Idaho YMCA for Blaine County School District		Idaho



SINCE 1987

- Arizona
- California
- Colorado
- Idaho
- Maryland
- Massachusetts
- Mexico City (Mexico)
- Minnesota
- Montana
- New Mexico
- New York
- Ohio
- South Carolina
- Texas
- Washington
- Wisconsin



Meet Julieta Ramírez

“When I look at these families, it is like seeing my own parents.”

Julieta Ramírez started working at PIQE over a decade ago, while she was still in college, today she is one of our Deputy Directors. She is part of the team that developed our new Family Leadership Program, led key educational equity efforts in the Central Valley via the Carnegie Corporation of New York grant and showcased key deliverables and findings at the 2023 National Community Schools and Family Engagement Conference.

“These are families that want the best for their children, but they do not have the knowledge or the tools needed.”

Julieta's background mirrors the challenges faced by many families we serve, having grown up in a non-English speaking household and as the first in her family to attend college. Her personal experiences with language barriers and educational aspirations equip her with a profound understanding of the community's struggles and needs.

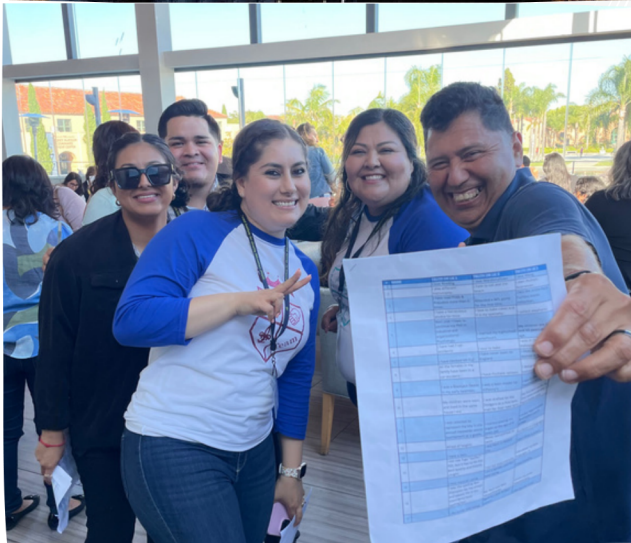
As a reflection of our organizational goal, Julieta embodies the principles of cultural competence and responsiveness. Her familiarity with the community's challenges allows her to connect deeply with the families, serving not just as a staff member but as a crucial link that enhances our mission to meet the unique needs of each family with empathy and understanding.

“You have to empower parents to advocate for their children's education,” she says.



Tenured Staff

Every individual plays a specific and important role on our team and we want to acknowledge those who have been with us for over 15 years. We appreciate your service, loyalty, and dedication.



25 Years

Blanca Alvarado

Teresa Andrade

20 Years

Ray Meraz

Lilian Esther Hernandez

Guillermina Patino

15 years

Carlos Robledo

Marta Quintanilla

Karla Rosenbery

Lorena Garcia

Sagrario Diaz

Heidi Salguero

“The best part about working at PIQE is seeing the families’ transformation and empowerment to make changes not only in their children’s school but also in their community.”

– Blanca Alvarado, Deputy Director at Modesto

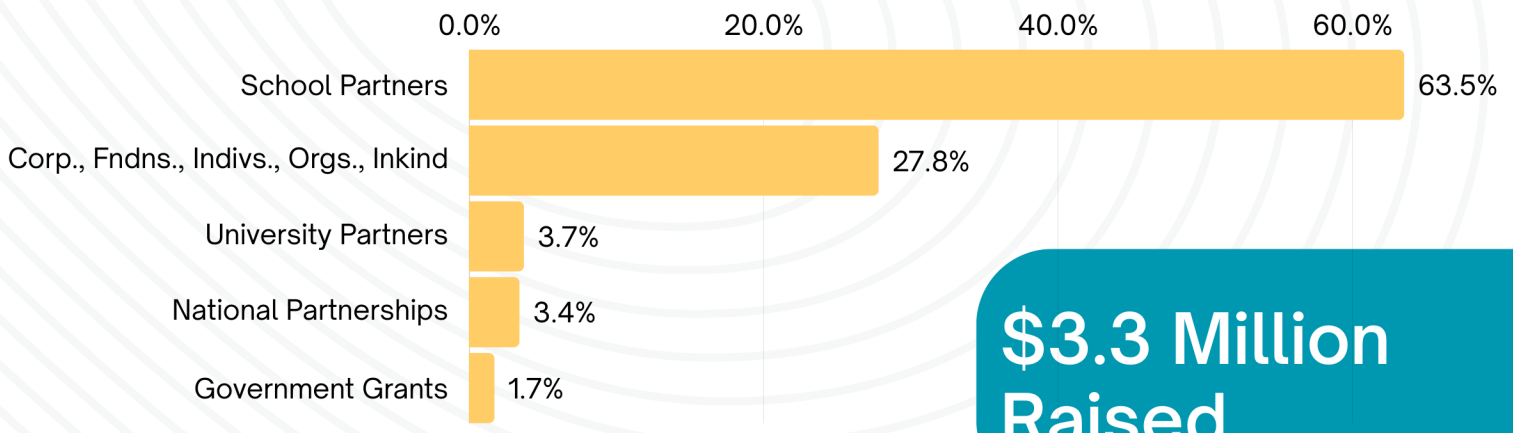
Financial Highlights



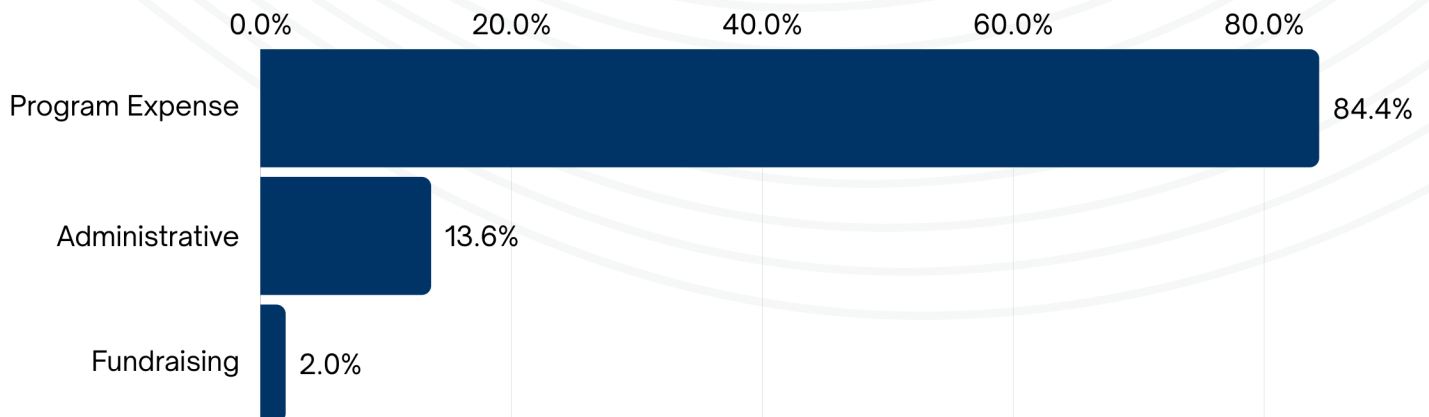
At Edison we believe that equity in education is not just a cornerstone of individual growth, it's the foundation of a thriving community. By empowering parents, PIQE has found a way to not only enhance student success but create a college-going culture in communities across Southern California.

**Bronwen Begakis, Corporate Philanthropy Advisor
Southern California Edison**

Income



Expenses



Thank You

Your involvement is the reason we positively influence thousands of families daily. United, we'll keep enabling families to actively participate in their children's educational paths.

CORPORATIONS AND FOUNDATIONS

Bill and Melinda Gates Foundation
 California Community Foundation
 California Public Utilities Commission
 Central Valley Community Foundation
 Comcast Corporation
 Fordham Foundation
 Fresno Building Healthy Communities
 Girard Foundation
 Golden 1 Credit Union
 Heising - Simons Foundation
 James B. McClatchy Foundation
 Kupanda
 Marin Community Foundation
 National Association for Bilingual Education
 San Diego Foundation
 Dr. Seuss Foundaion
 Sobrato Family Foundation
 Southern California Edison
 The California Endowment
 The Ralph M. Parsons Foundation
 T-Mobile
 United Parent Leaders Action Network
 Weingart Foundation
 William and Flora Hewlett Foundation
 Wonderful Foundation
 Nicholas B. Ottaway Foundation
 Cox Foundation

GOVERNMENT

County of Fresno
 Los Angeles County Office of Education
 The Santa Clara County Office of Education
 U.S. Department of Education

UNIVERSITY PARTNERS

CSU-Fresno
 CSU-Sacramento
 CSU-San Jose
 CSU-San Marcos
 CSU-San Diego
 CSU-Santa Barbara, University Enterprise Corporation
 San Diego State University
 University of California Los Angeles
 University of California San Diego
 University of Texas Austin Dana Center

SCHOOL PARTNERS

Adam Elementary School
 Ahwahnee Middle School
 Albert F. Biella Elementary
 Alfred B. Nobel Charter Middle School
 Alvin Elementary
 Amc Ytec, Lf Smith & Southwest
 Andrew Hill High School
 Animo Pat Brown
 Arlington High School
 Arlington Regional Learning Center
 Arrellanes Junior High School
 Art Freiler School K-8
 Bakersfield High School
 Banning High School
 Bartlett Middle School
 Bayside Elementary
 Bell Middle School
 Belleview Elementary
 Bellflower High School
 Ben Lomond Elementary School
 Benjamin Franklin Elementary School
 Betty Gibbel Regional Learning Center
 Berkeley USD Middle School
 Berkeley USD Elementary School
 Berkely Unified School District
 Bernice Ayer Middle School
 Bohannon High School
 Boulder Ridge Elementary School
 Bridges Academy Middle School
 Brown Elementary School
 Browning Road Steam Academy
 Bud Carson Middle School
 Buhach Colony High School

California City Middle School
Calistoga Joint Unified School District
Campo-Clover Flat Elementary School
Campus Park Elementary School
Canyon & Creekside Middle School
Capistrano Valley High School
Carrillo Ranch Elementary School
Caruthers USD Elementary School
Caruthers USD High School
Cedar Lane Elementary School
Ceiba College Preparatory Academy
Centennial High School
Central Middle School
Central Unified School District
Central High School
Chemawa Middle School
Chula Vista High School
Claremont High School
Cohasset Street Elementary School
Colony High School
Colton Middle School
Columbus Elementary School
Commonwealth Elementary School
Corvallis Middle School STEAM
Crawford High School
Creekside Junior High School
Creekside Middle School
Crystal Middle School
Cypress Elementary School
Dana Hills High School
Denair Elementary
Davidson Middle School
David Long Regional Learning Center
Desert Ridge Academy School
Don Antonio Lugo High School
Don E. Kennedy Regional Learning Center
Dos Caminos Dual Immersion School
Dos Palos High School
Dr. J. Michael McGrath Elementary School
Dr. Julian Nava Learning Academy
Dr. Martin Luther King Jr. Elementary School of Arts
Dr. Quincy Jones Elementary School
Dr. Theodore T. Alexander Jr. Science Center
Dutcher Middle School
Earle Williams Middle School
East Bakersfield High School
Educational Partnership High School
Eisenhower High School
El Camino Junior High School
El Camino/Oceanside High School
El Roble Intermediate
Ethan A. Chase Middle School
Grover Beach Elementary School
Carl Hankey K-8 Academy
Harden Middle School
Harmony Magnet Academy
Harvest Valley Elementary School
Hawthorne Middle School
Hawthorne School District
Healdsburg Elementary School
Healdsburg Junior High School
Helen Lehman Elementary School
Hemet High School
Hidden Hills Elementary School
Highland Elementary School
Highland High School
Highlands High - Rio Linda High School
Hoover High School
Horizon Elementary School
Howard Pence Elementary School
Indio High School
Jack G. Desmond Middle School
Jackson Elementary School
James Lick High School
Jefferson High School
William G. Jehue Middle School
John Doyle Elementary School
John Gutierrez Middle School
John Marshall Elementary School
Joli Ann Leichtag Elementary School
Julian Nava Middle School
Julien Elementary School
Kammann Elementary School
Katherine Johnson Middle School
Keiller Leadership Academy
Kenilworth Junior High School
Kern Avenue Elementary School
Keyes Elementary School
Kucera Middle School
La Habra High School
La Mirada/Smythe Elementary School
Lafayette Primary Center
Lakewood High School
Lange Elementary School
Las Palmas Elementary School
Lilian Larsen Elementary School
Lincoln Elementary School
Lincoln High School
Loma Vista Elementary School
Lorena Falasco Elementary School
Los Altos High School
Los Banos Elementary School
Los Alisos Middle School
Los Banos Jr. High School

Eureka City Schools – Elementary School
 Eureka City Schools – High School
 Eureka City Schools – Middle School
 Fallbrook Union School District
 Family Resource Center
 Family Resource Center–RUSD
 Farmdale Elementary School
 Farmersville Unified School District
 Fay Elementary School
 Fesler Junior High School
 Fipps Primary School
 Florin High School
 Foothill High School
 Franklin Elementary School
 Fremont Unified School District
 George Kelly School K–8
 Grand Terrace High School
 Granger Junior Middle School
 Great Valley Elementary School
 Greenleaf Elementary School
 Griffith Middle School
 Griffith Steam Magnet Middle School
 Mendota Elementary School
 Mendota High School
 Mendota Junior High School
 Mercy Springs Elementary School
 Mesa View Elementary School
 R.M. Miano Elementary School
 Miguel Contreras Learning Complex
 Mira Mesa High School
 Mira Monte High School
 Mission Oak High School
 Modesto High School
 Modesto Middle School STEM
 Modesto City Schools
 Modesto Middle School
 Mojave Elementary School District
 Mojave High School
 Monlux Elementary School
 Montara Elementary School
 Monte Vista Elementary School
 Monte Vista High School
 Monte Vista Middle School
 Montgomery Middle School
 Morse High School
 Mount Miguel High School
 Mountain View High School
 Mt. Pleasant High School
 Natividad Elementary School
 Nesbit Middle School
 Nettie L. Waite Middle School
 Los Alisos Middle School
 Los Banos Jr. High School
 Los Padres Elementary School
 Luther Burbank High School
 Lyndon B. Johnson Elementary School
 Madera High School
 Madera South High School
 Madison High School
 Manzanita Elementary School
 Mar Vista High School
 Marco Forster Middle School
 Marina Vista Elementary Arts Academy
 Martin Luther King Jr. Middle School
 Marysville Joint Unified School District
 Marysville High School
 Matilda Torres High School
 Matthew Gage Middle School
 Maywood Academy High School
 McCabe Elementary School
 McDowell Elementary School
 McFarland Middle School
 McKinley Elementary School
 Romoland Elementary School
 Sacred Heart Catholic School
 Saint Michael’s Catholic School
 Salida Elementary School
 Salida Middle School
 San Antonio High School
 San Clemente High School
 San Diego High School
 San Jacinto High School
 San Juan Capistrano Elementary School
 San Juan Hills High School
 San Leandro High School
 San Marcos Middle School
 San Martin / Gwinn Middle School
 San Rafael High School
 San Ysidro High School
 San Ysidro Middle School
 Santa Clara High School
 Santa Maria High School
 Santa Maria Joint Union High School District
 Santa Teresita Catholic School
 Shadow Hills High School
 Shafter High School
 Shorecliffs Middle School
 Silver Creek High School
 Silverado High School
 Solana Beach School District
 South Lake Tahoe Middle School
 Southwest High School

Newark Elementary School
Newark Middle School
Newhall Elementary School
Newport Harbor High School
Nicoloff Elementary School
Nipomo Elementary School
Nogales High School
North Mountain Middle School
North Elementary School
Norwood Jr High /Rio Tierra Jr. High School
Oakgrove High School
Oceano Elementary School
Old Orchard Elementary School
Olympic Primary Center
Orosi High School
Orthopedic Medical Magnet High School
Overfelt High School
P.A. Walsh Elementary School
Pacific Drive Elementary School
Palm Springs Regional Learning Center
Pasadena High School
Paso Robles High School
Paso Robles Middle School
Patriot High School
Patterson High School
Peachland Avenue Elementary School
Petaluma High School
Pioneer Elementary School
Pond Elementary School
Port of Los Angeles High School
Potrero Elementary School
Praire Vista Middle School
Price Scholars/Wilson Middle School
Prospect High School
Quincy Jones Elementary School
Raisin City Elementary School
Ramona High School
Rancho Milpitas Middle School
Rancho San Juan High School
Rancho Viejo Middle School
Rialto High School
Rialto Middle School
Rice Elementary School
Riverdale Elementary School
Riverdale High School
St. Frances Catholic School
St. Ignatius Catholic School
St. Michael Catholic School
St. Helena Elementary School
Steele Lane Elementary School
Sumner Danbury Elementary School
Sunset Elementary School
Sweetwater High School
Tahquitz High School
Tehipite Middle School
Tenaya Middle School
Terra Linda High School
The Accelerated School
Theodore Alexander Science Center
Theodore Alexander Science Elementary School
Thomas Jefferson Middle School
Thomas Law Reed Elementary
Thomas Russell Middle School
Tioga Middle School
Tommie Kunst Middle School
Tulare Joint Union High School
Tulare Union High School
Tulare Western High School
Tumbleweed Elementary School
Turlock High School
Turlock Junior High School
Twin Rivers Elementary School
Twin Rivers Unified School District
University Heights Middle School
Upland Junior High School
Valley High School
Venetia Valley K-8 School
Victor Valley High School
Viejo Elementary School
Vista Del Mar Middle School
Wakefield Elementary School
Walters Junior High School
Walters Middle School
Washington Academic Middle School
Washington Colony Elementary School
Washington Elementary School
Weaver Middle School
West Adams High School
Westmont High School
Wilcox High School
Wiley Canyon Elementary School
Williams High School
Willow Elementary School
Willows High School
Winters High School
Woodlake Unified School District
Woodland Park Middle School
Woodville Elementary School
Workman Elementary School
Workman High School
Yerba Buena High School
Young Empowered Scholars Academy
Elementary School
Yucca Elementary School



LEADERSHIP

Executive Leadership

Gloria Corral
President and CEO

Derek Parker
Chief Operating Officer

Ileana Lopez
V.P. External Relations

Elizabeth Cabrera
V.P. Program and Impact

Regional Executive Directors

Sonia De Leon
Bakersfield

Christan Maxwell
Bay Area

Gabriela Rios
Central Valley

Emma Cabrera
Los Angeles

Lilian Hernandez
Inland Empire

Sergio Rosas
San Diego

Board of Directors

Chair

Karen Y. Zamarripa
President/CEO
Karen Zamarripa Consulting

Vice Chair

Susana I. Santana
Vice President, Legislative
Strategy AT&T California

Treasurer

Ryan E. Alcantara
Career Services Manager
University of Southern
California Rossier School
of Education

Dr. Jamillah Moore

V.P. of Student Affairs
San Francisco State University

Rose Elena McAuliffe

Chief Financial Officer and VP
for Business and Finance
California State University
Stanislaus

Guillermo Mayer

President/CEO
Public Advocates

Dr. Nicole D. Porter

Vice-President of Student
Services and Equity at
American River College

Dr. Sera Hernandez

Department of Dual Language
and English Learner
Education/College of Education
San Diego State University

Leonor Velazquez Davila

Associate Director
Antitrust Compliance and
Americas Legal
Compliance
Intel Corporation

Fidel Ramirez

Chief Executive Officer
Vaughn Next Century
Learning Central



Home Office
22 West 35th Street Suite 202
National City, CA 91950
T: 619.420.4499
www.PIQE.org | info@piqe.org

Connect With Us

www.PIQE.org | @PIQEUSA     